

RMP

BEARINGS

PRODUCTS MADE WITH PRECISION AND PASSION

CENTER BEARING



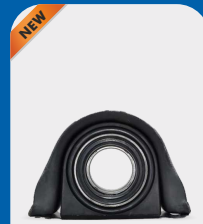
RT-6011 BB-WB

TATA 3537 / LEYLAND U TRUCK / BHARAT BENZ WITH BRACKET



RT-6013 WOS WS

ASHOK LEYLAND 3118 (RHD SHAFT) SEAL SIZE-78X100X10



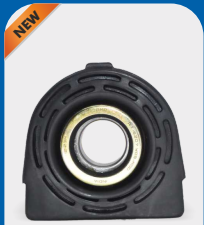
RT-6013 WB

ASHOK LEYLAND 3118 (RHD SHAFT) WITH BRACKET



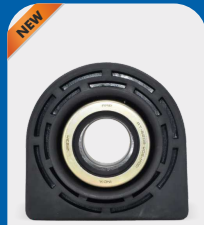
RT-6014WOS

6014WOS BHARATBENZ NEW MODEL



RT-6207 MOD

TATA SUMO/6207 WOS



RT-6208 MOD

TATA 92 MODEL WITH RUBBER ASSY



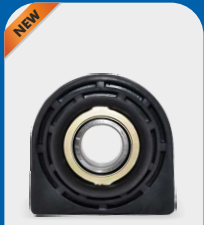
**RT-6211
BIG N/M WB**

TATA 2518 / AMW (RSB SHAFT) WITH BRACKET



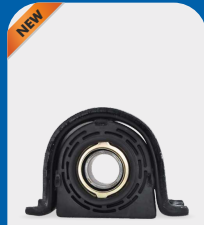
RT-6213 WOS

VOLVO EICHER COMM. VEHICLE -8035 PRO 8000 ALL-3532,4932,4936



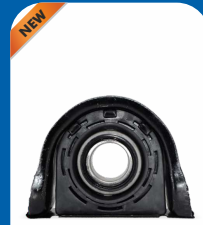
RT-88508 WOS P

88508 WOS PTATA 709EX/909EX



RT-88509 WB

TATA 1613/2515C (SPICER TYPE) WITH BRACKET



RT-88512 AL WB

ASHOK LEYLAND MSL TYPE-14 TYRE WITH BRACKET



RT-88512 WB

88512 WITH BRACKET



mail@rmpbearings.com



www.rmpbearings.com



rmpbearings



RMP

BEARINGS

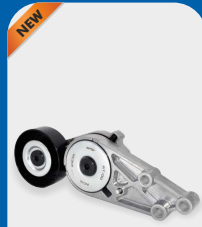
PRODUCTS MADE WITH PRECISION AND PASSION

TIMING TENSIONER & PULLEY



RT-009

BELT TENSIONER FOR VOLVO EICHER 3.3L 4 CYLINDER DIESEL E483



RT-010

BELT TENSIONER FOR MAHINDRA SCORPIO (M-HAWK) 2.2L "4"CYLINDER DIESEL



RT-011

BELT TENSIONER FOR JCB 3DX (BIG) 4.4L/ 4.8L"4"CYLINDER DIESEL



RT-012

BELT TENSIONER FOR TATA CUMMINS 6CT,5.6L"6"CYLINDER DIESEL ENGINE, 6.7L "6" CYLINDER DIESEL ENGINE /3976834



RT-013

BELT TENSIONER FOR TATA SIGNA 1618 36WB & 2818 55WB B56



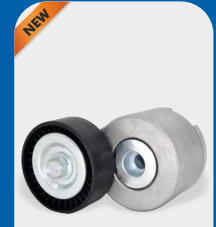
RT-014

BELT TENSIONER FOR JCB 3DX (SMALL) 4.4L/ 4.8L "6"CYLINDER DIESEL



RT-PU015

MARUTI SUZUKI 4PK GROOVED PULLEY ALL 1.0/ 1.2/1.4PETROL MODELS



RT-016

BELT TENSIONER FOR MARUTISUZUKU SWIFT/RITZ/ ERTIGABREZZA/BALENO/S-CROSS MODEL 1.3L"4"CYLINDER DIESEL



RT-017

BELT TENSIONER FOR ASHOK LEYLAND NEW MODEL 1.5L "3"CYLINDER DIESEL ENGINE



RT-018

BELT TENSIONER FOR ASHOK LEYLAND OLD MODEL 1.5L "3"CYLINDER DIESEL ENGINE



RT-PU019
RT-019

TATA IDLER PULLEY 4923, 4023,2528 BS6 BS4 BS3



RT-PU020
RT-020

MARUTI SUZUKI 60 X 25 IDLER PULLEY



mail@rmpbearings.com

www.rmpbearings.com



rmpbearings



RMP[®]

BEARINGS

PRODUCTS MADE WITH PRECISION AND PASSION

TAPER ROLLER BEARINGS



RT-12435

FARMER TRACTOR / CTPL-
MINI TRACTOR (12435)



RT-805165A

FRONT WHEEL BEARING
FOR VOLVO



RT-749/742

WHEEL BEARING
FOR TATA 4018



RT-25590/23

25590/23 DIFFERENTIAL
BEARING FOR EICHER
CANTER



RT-29685/20

FARMATRACK 45-50HP/
DIFF.BEARING VOLTAS/
FORD3000/3600



RT-30314

30314 AMW WHEEL
BEARING



RT-32220

32220 TATA 4018



RT-32222

32222 TATA 4018



RT-33208

33208 IVECO RENAULTRVI,
MAN CENTRE SHAFT



RT-581079AA

REAR WHEEL BEARING
FOR VOVLO



mail@rmpbearings.com

www.rmpbearings.com



[rmpbearings](https://www.facebook.com/rmpbearings)



RMP[®]

BEARINGS

PRODUCTS MADE WITH PRECISION AND PASSION

CLUTCH RELEASE BEARING



RT-E21 SC

VOLVO/MAN TRUCK



RT-5555 SC

**CLUTCH BEARING FOR
SWARAJ 735FE,744FE**



RT-6396 SC

**CLUTCH RELEASE BEARING
FOR ASHOK LEYLAND 1.75
INCH 6S GB -
DIA 380 CLUTCH - Bs6**



RT-6398 SC

**CLUTCH RELEASE BEARING
FOR ASHOK LEYLAND 1.75
INCH 9S GB -
DIA 395 CLUTCH - BS6**



RT-6679 SC

**CLUTCH RELEASE BEARING
FOR TATA BS6 DIA 395
CLUTCH SIGNA 4225.S TRAILER**



RT-78109 SC

**TATA BSVI-SIGNA
2825.K/3525.K/4225.K
/4225.K/ 4825.K/2823.K/
PRIMA3525.TK/2825.K/2528.K**



mail@rmpbearings.com

www.rmpbearings.com



[rmpbearings](https://www.facebook.com/rmpbearings)

